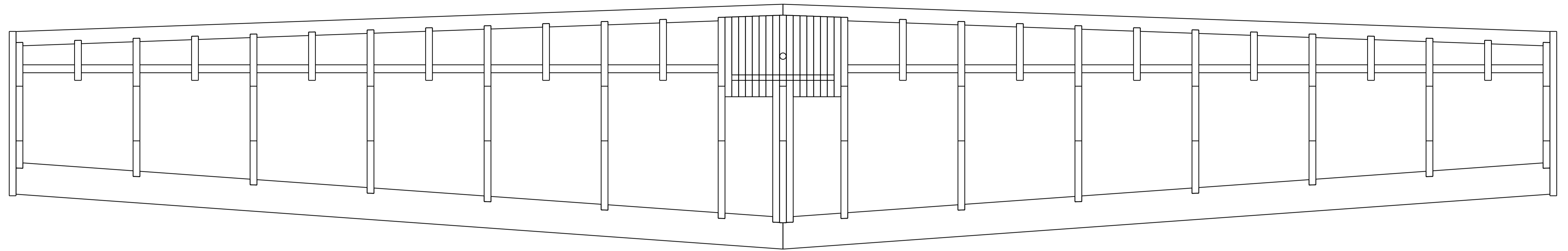


oKuDa HSTAB Built-Up TE Miche;1

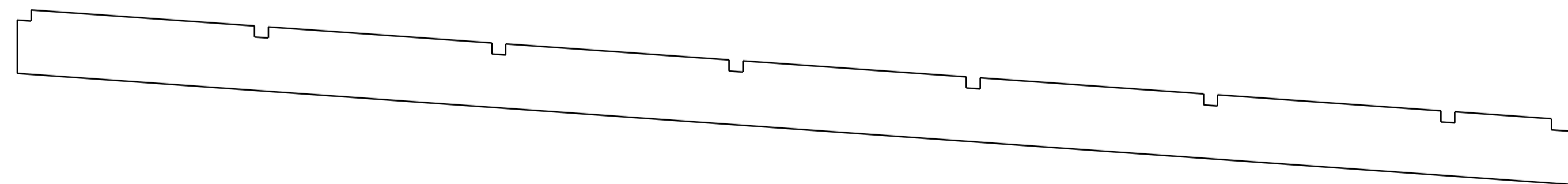
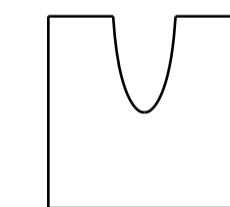
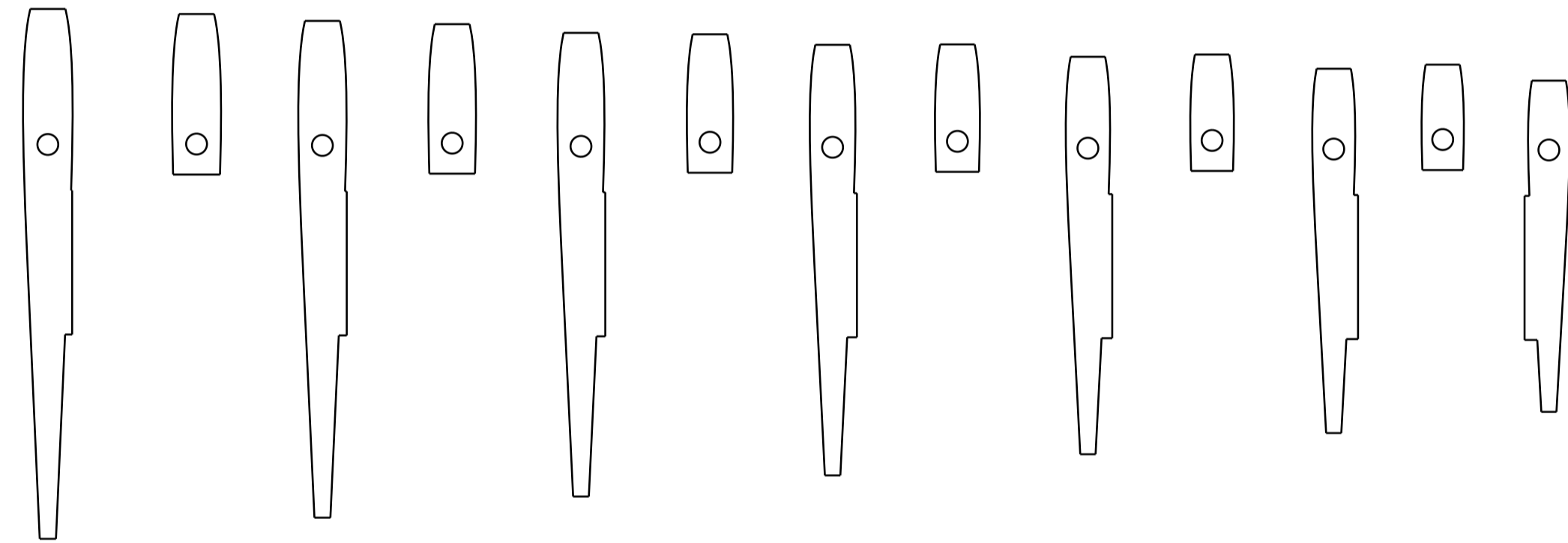
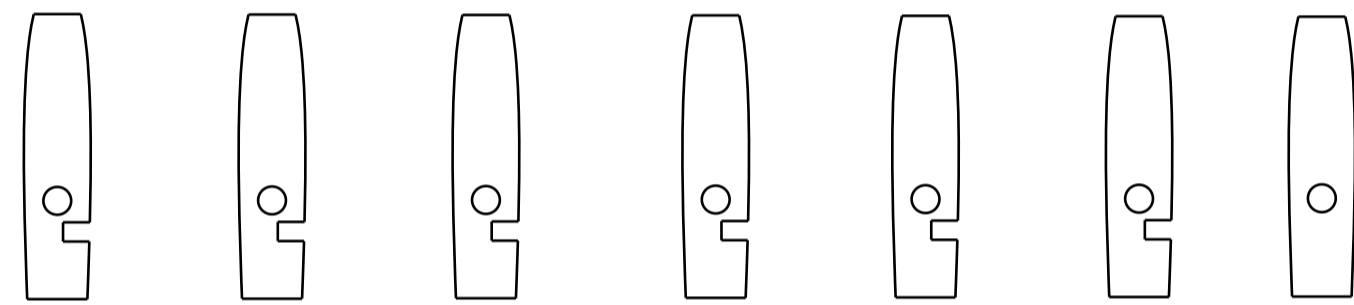
Leading edge CF .0625" OD
Spar CF .200" OD



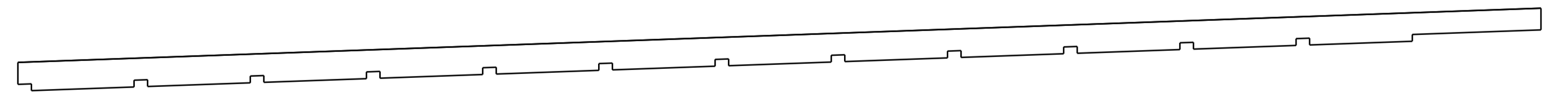
Middle Rib
1x Balsa .125"



All ribs unless otherwise specified
2x Balsa .125"



Trailing Edge
2x .125" balsa shaped to a triangle (as per Steve's suggestion)
4x .0625" balsa (sandwich with carbon as per Michel's suggestion).



Leading Edge
4x Balsa .125"